

THE DANISH ROYAL THEATRE

General Information & Technical Specifications



OLD STAGE

(Gamle scene)



DET KGL. TEATER

CONTENT

| | |
|--------------------------------------|---|
| Welcome to Old Stage..... | 4 |
| Address..... | 4 |
| Map..... | 4 |
| GENERAL INFORMATION..... | 5 |
| Parking & Load in | 5 |
| Entrance (crew)..... | 5 |
| Backstage area & dressing rooms..... | 5 |
| Cafeteria | 6 |
| Smoking..... | 6 |
| Internet..... | 6 |
| Crew (In-house)..... | 6 |
| Rehearsal studios | 6 |
| Get out | 6 |
| TECHNICAL SPECIFICATIONS..... | 7 |
| Seating capacity..... | 7 |
| Stage dimensions | 7 |
| Orchestra pit..... | 7 |
| Fly bars | 7 |
| Revolving stage..... | 8 |
| Fire curtain..... | 8 |
| Rigging..... | 8 |
| Curtains and backdrops | 8 |
| Risers/platforms..... | 8 |
| LIGHTING..... | 9 |
| Lighting equipment and bridges..... | 9 |

| | |
|--|----|
| Stage lighting..... | 9 |
| Lighting in the auditorium | 10 |
| Special lighting and effect equipment..... | 11 |
| SOUND & VIDEO | 12 |
| Sound equipment..... | 12 |
| Reverberation system..... | 12 |
| PA-system..... | 12 |
| Speakers:..... | 12 |
| Video projection | 12 |
| APPENDIX #1: SEATING PLAN..... | 13 |
| APPENDIX #2: SCENE PLAN..... | 14 |
| APPENDIX #3: STANDARD LIGHTING PLOT..... | 15 |

WELCOME TO OLD STAGE

The Royal Danish Theatre has been located at Kongens Nytorv in Copenhagen since 1748, and we are pleased to welcome you to our historic and traditional venue.

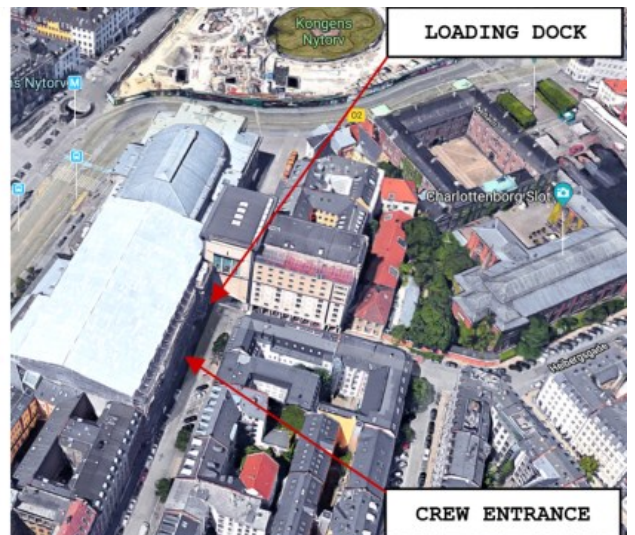
We hope you will take the time to read the following pages, as they should provide you with answers to the most common questions prior to your performance at the Old Stage. The information in this document are guidelines and everything is subject to change and our in-house productions. We encourage all our guests to have a close dialogue with our technical staff before and during your stay.

We look forward to having you here, and hope you will have a pleasant stay.

Address

The Royal Danish Theatre
August Bournonvilles Passage 2-8
1017 Copenhagen K

Map



GENERAL INFORMATION

Parking & Load in

Situated in the city centre, the venue has limited access to parking. Upon arrival at the loading dock ("Vognporten") the security will open the gate, and you will be able to unload inside the building at ground floor just below the stage.

The elevator in the loading dock goes directly to the stage floor. Elevator capacity is 6000 kg (Width 2.90 m. / Height 2.90 m. / Length 7.25 m.).

After unload you will have to park the car somewhere in the area, in some cases it will be possible to park inside at the loading dock (ask permission from Head of Stage/Stage Manager).

Entrance (crew)

The crew entrance ("Sceneindgang") is located in Tordenskjoldsgade no. 8. There you will meet our friendly security staff. It is important that you send a guest list in advance of your arrival to your contact person.

Backstage area & dressing rooms

Backstage area will be established close to the stage with refrigerator, tables, chairs and power for mobile charging.

This venue has a number of dressing rooms (small size) next to the stage. Only two dressing rooms with bath & toilet.

Please inform your contact person about your needs.

Feel free to bring your own catering to the backstage area or buy from the in-house cafeteria. There are no kitchen facilities backstage.

Cafeteria

The in-house cater offers meals and drinks from a buffet paid with cash, credit card or Mobile Pay. It is possible to order catering to meetings etc. from the cafeteria.

Smoking

National law prohibits smoking in public areas, including performance and backstage facilities. A dedicated smoking area will be available inside the venue.

Internet

Free Wi-Fi: KGLSPOT. No password needed.

Crew (In-house)

The required in-house crew varies from production to production and is coordinated with the stage management accordingly.

Please note: Rigging crew is not included and work after 23.00 is overtime.

Rehearsal studios

The theatre has several rehearsal studios.

Please contact us to check for availability and use.

Get out

Immediately after the show the scene has to be cleared. Pick-up of equipment the following day has to be coordinated with the Stage Manager/Head of stage in advance.

TECHNICAL SPECIFICATIONS

Seating capacity

Old Stage is approved to 1405 seats by the authorities.

This includes 106 chairs in the orchestra pit.

There is room for 2 wheelchairs on the parquet.

See Appendix #1 for seating plan

Stage dimensions

Depth max: 21.2 m. (from iron curtain to backgate + 2.5 m. apron stage)

Width max: 26.3 m. from wall to wall.

Height: 22 m. (stage tower height)

Proscenium opening: Height from 5.75–7.85 m. Width 12.3 m.

Maximum load pr. square meter on the stage floor: 500 kg./m².

See appendix #2 for scene plan.

Orchestra pit

The orchestra pit has 3 possible designs:

4.5 m. x 17.5 m.

6.5 m. x 17.5 m.

8.5 m. x 17.5 m.

Please note that the orchestra pit will reduce the seating, please contact Head of Stage/Stage Manager.

Fly bars

There is a total of 36 electrical fly bars and 25 hand driven fly bars

Length: 19 m.

Load: 300 kg. per bar (equally disposed).

Speed: 1.2 m./sec.

4 removable point hoists, load: 250 kg. per hoist.

Flying height: 22 m.

Vacant bars are subject to availability and in-house productions.

Revolving stage

The revolving stage is operated by the same computer system as the electric bars of the upper stage machinery.

Diameter: 15.5 m.

Rotation speed (measured at the edge): Maximum 0.9 m/s.

Stop accuracy ± 5 cm.

Vacant revolve is subject to availability and in-house productions.

Fire curtain

The iron curtain is hydraulically operated and releases the smoke-hatches when it hits the floor.

Fire curtain line is to remain cleared from any solid objects (risers, keyboards etc.).

Rigging

No fixed points to PA, rigging points can be arranged (max. 300 kg.)

Rigging inside proscenium is always behind fire curtain.

Rigging in the auditorium: Please ask Head of Stage/Stage Manager

Curtains and backdrops

Black backdrop (10 m. x 19 m.)

Black velvet, 10 legs (3.5 m. x 10 m.) and 5 soffits (3.5 m. x 19 m.)

White and grey PVC canvas (10 x 19 m.)

Black Tata – 2 loose backdrops for bars.

Red velvet tata on fly bar number 2.

The Acropolis curtain on fly bar number 1

Risers/platforms

Platforms 2 x 1 m., different heights are available.

Please contact Head of Stage to check for availability.

LIGHTING

Lighting equipment and bridges

The spots of the theatre and special equipment hang as shown on the standard light plot (appendix #3). Below you will find a review of the individual locations and fitting heights.

The FOH position for lights is located on the 1st balcony in an operator room. This ensures clear sightline to the stage for the audience and the LD as well.

Please note: No lights will be removed or taken down for external shows.

Lighting bridge 2: Vari-Lite VLZ Profile, 5 units

Robe T2 Fresnel, 5 units

Lighting bridge 3: Vari-Lite VLZ Profile, 5 units

Robe T2 Fresnel, 5 units

Lighting bridge 4: Vari-Lite VLZ Profile, 5 units

Robe T2 Fresnel, 5 units

Lighting bridge 5: Vari-Lite VLZ Profile, 5 units

Robe T2 Fresnel, 5 units

Lighting bridge 5: Vari-Lite VLZ Profile, 5 units

Robe T2 Fresnel, 5 units

Lighting bridge 8: Equipped with cyclorama lighting (Vivid Selador-R) for the PVC screen

Stage lighting

B. Galleries:

On both sides of the stage spotlights are fitted on the railings of the galleries. Each side is equipped with:

Niethammer 1.2 kW profile spots, 12 units.

Niethammer 1.2 profile spots, 12 units.

Height above stage floor: 10.5 m.

C. Fly towers:

Both sides are equipped with:

Niethammer 1,2 kW profile spots, 8 units.

Height above stage floor, 3.0 m.

Niethammer 1.2 kW profile spots, 8 units.

Height above stage floor 5 m.

Robe Spiider, 2 units.

D. Floor ramps:

Selador ground row

E. Front stage ramps:

LED RGBW

F. Booms:

5 groups each with:

Niethammer 1.2 kW profile spots, 2 units.

Height above stage floor (spread on the boom) 0 to 4 m.

Lighting in the auditorium

H. In proscenium:

On each side:

Niethammer 1.2 kW profile spots, 2 units.

Height above stage floor: 9.0 m.

Niethammer 1.2 kW profile spots, 2 units.

J. First balcony:

On each side:

Niethammer 1.2 kW profile spots, 8 units.
Height above stage floor: 7.5 m.

K. Second balcony:

On each side:

ADB 1.2 kW profile spots, 6 units.
Height above stage floor: 10 m.
Robe Spüider, 2 units.
Robe T1 Profiles, 2 units.

L. Under the ceiling by the Aladdin Room:

On each side:

ETC Lustr 3, 3 units
Height above stage floor, 13.5 m.

Special lighting and effect equipment

Follow spot room (the Aladdin Room)

Robert Juliat Aramis follow spots 2.5 kW HMI, 4 units.
Fitting height above stage floor 13.5 m.

Fly towers

Robert Juliat follow spots 1.2 kW HMI, 2 units.
Fitting height above stage floor: 5.0 m.

Galleries

Robert Juliat 2.5 kW HMI 18° - 38°, 10 units.
Fitting height above stage floor: 10.5 m.

SOUND & VIDEO

Sound equipment

FOH sound will be on the floor (parquet) under the 1st balcony, hence seats will be removed. Please inform about the size of the mixer.

Seats to be removed:

Row 12 – seats 6, 8 and 10.

Row 13 – seats 6, 8, 10, 12 and 14.

Row 14 – Seats 10, 12, 14, 16 and 18.

Reverberation system

The Old Stage is equipped with a reverberation system, which has 3 fixed settings and is operated by the stage manager.

PA-system

Mixing desk = "Studer" (Vista 5m3 digital)

Speakers:

Prosc.-ht. L/R.: L'Acoustics (Kiva)

Prosc - sub.: L'Acoustics (4*18")

Scene-ht. L/R. front: L'Acoustics (108 XT)

Scene-ht. L/R. center: L'Acoustics (115 XT)

Scene-ht. L/R. back: L'Acoustics (115 XT)

9 kiva in both sides + 2 sub 18" in each side.

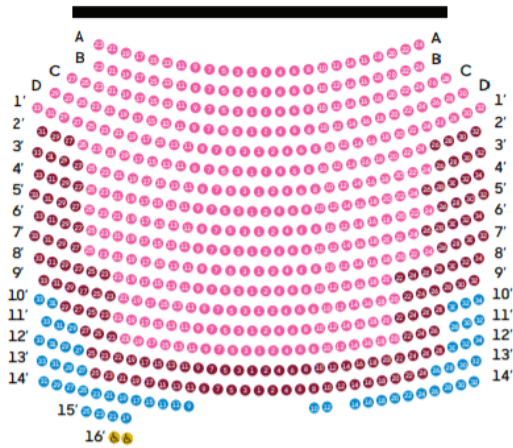
Video projection

Christie: 18 K

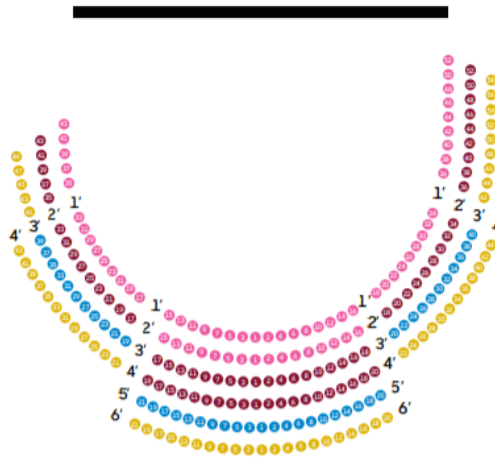
Panasonic 21 K

APPENDIX #1: SEATING PLAN

Gamle scene
Parket



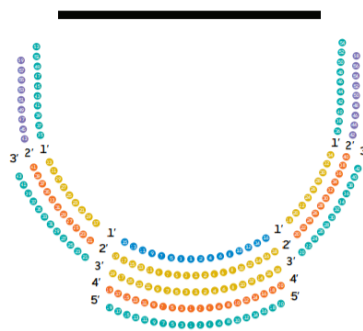
Gamle scene
Balkon



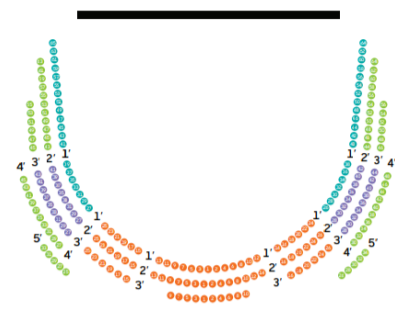
Gamle scene
1. etage



Gamle scene
2. etage

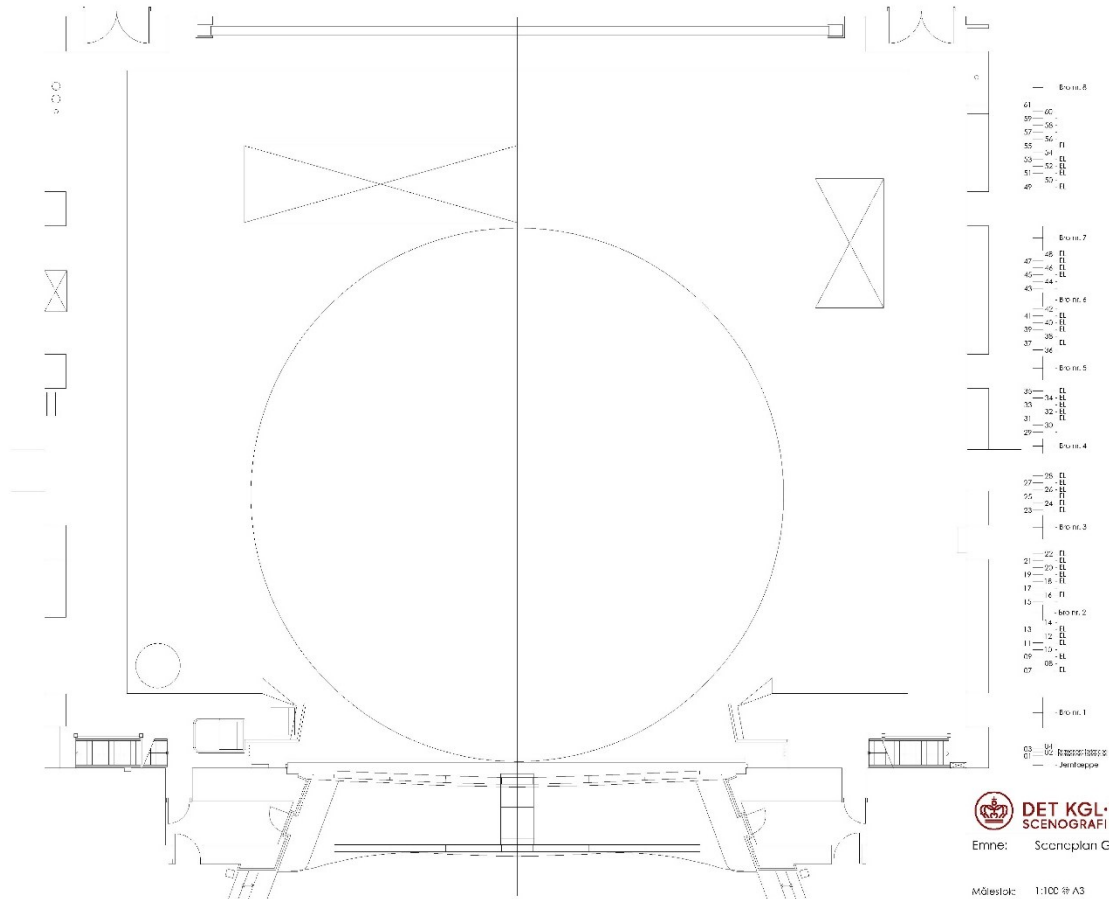


Gamle scene
Galleri



For PDF-file please visit: <https://kgfteater.dk/brug-teatret/i-teatret/salsplaner/>

APPENDIX #2: SCENE PLAN



Emne: Scenoplani Gl. scene

Målestok: 1:100 på A3

Date:

Tegn. nr.:

Side 1 of 1

Please acquire the original PDF-file from your contact person if needed.

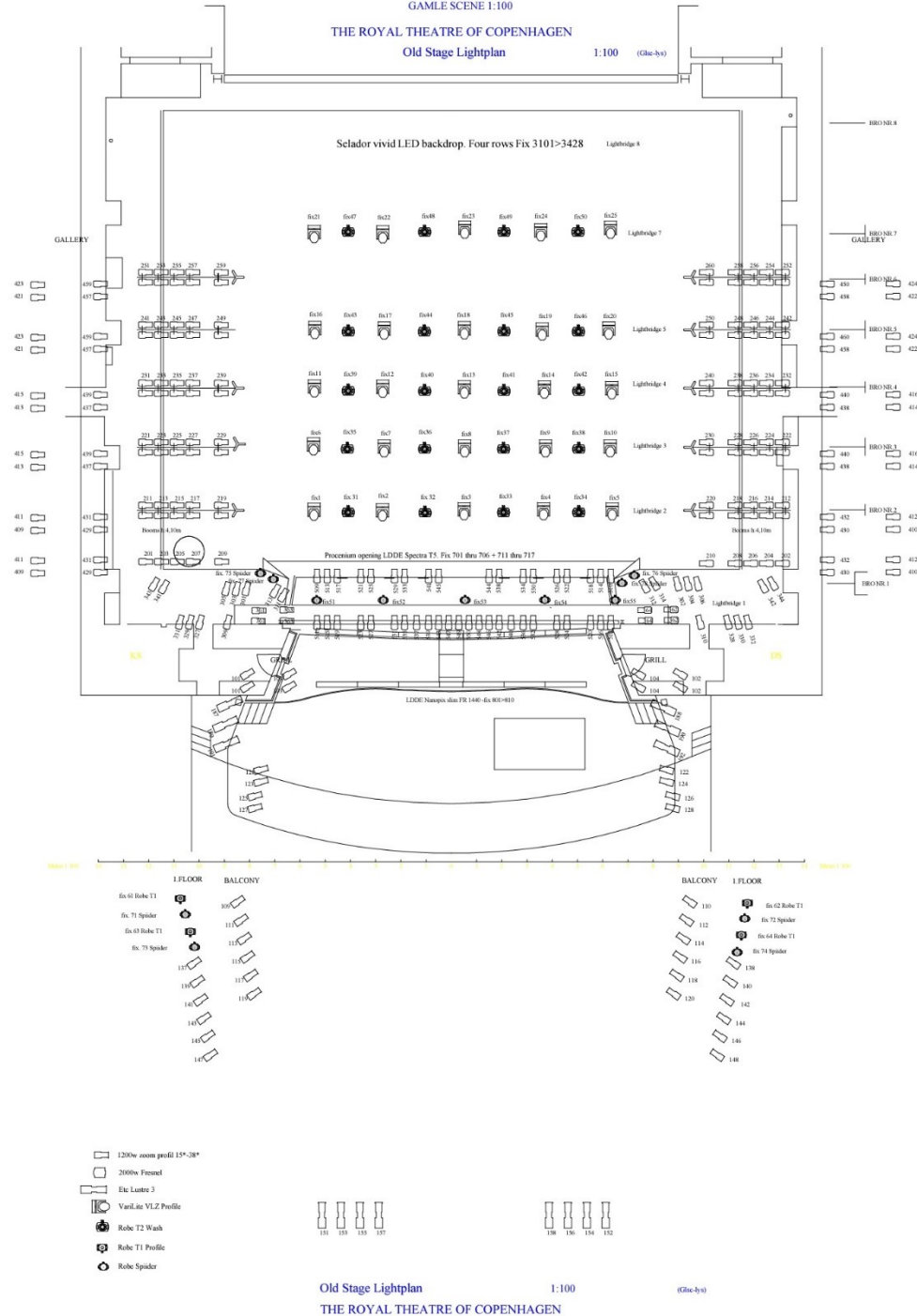
The PDF-file is created in 1:100 printed on A3.

Additional drawings are available if needed.

APPENDIX #3: STANDARD LIGHTING PLOT

Det Kongelige Teater

GAMLE SCENE 1:100
 THE ROYAL THEATRE OF COPENHAGEN
 Old Stage Lightplan 1:100 (Gibc-by)



Please acquire the original PDF-file from your contact person if needed.